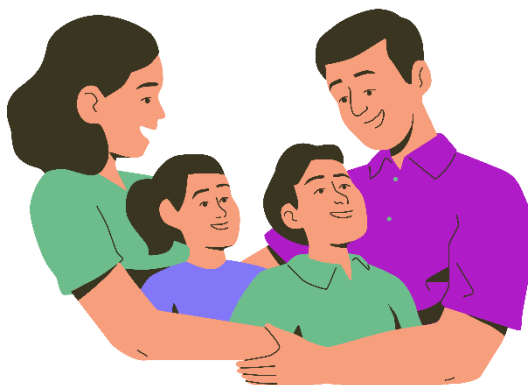


Services for Parents/Carers



We recognise that it can be a stressful time for parents/carers and children who are being assessed for autism. Our [Information, Advice & Guidance](#) team offer a wide range of free services to support individuals and families through this time.

You can find the information about services specific to your area below.

If you would like to know about services for parents/carers in Hampshire, please [click here](#).

To find out more about the services for parents/carers in Southampton, please [click here](#).

For Information about parents/carers in the Isle of Wight, please [click here](#).



You can also use the general enquiries contact details to talk with one of our community access team members.

General Enquiries Tel: 02380 766162

Email: information.advice@autismhampshire.org.uk