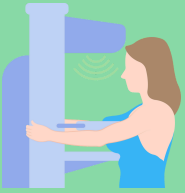




# Breast Screening



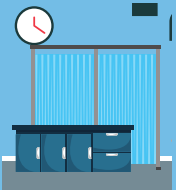
Breast screening can detect cancers early so that any suspicious lumps can be treated before serious problems arise.



Breast screening appointments are usually carried out in a NHS mobile unit in your local area.



Once at the breast screening clinic, you will be checked-in.



Instructions will be given where to change.



A mammogram machine takes images from different angles of the breast.



You will be told how long the breast screening will take and given instructions.



The results will be posted to you directly.